

Design with Overlength Glass



Transparency and Aesthetics

Design with Overlength Glass

from 6 to 18 metres

Design and use

Overlength glass shapes the architectural character of a building's exterior as well as altering the internal atmosphere. Inside, the boundaries seem to increasingly disappear and daylight floods the space. Outside, the large [glass facades](#) appear seamless and monumental.

Overlength glass panes are recommended wherever the goal is to achieve an open, airy design with fluidity between the interior and exterior environment. The spectrum of applications in construction where Overlength glass panes can be used is broad:

- Office buildings
- [Museums](#)
- [Exhibition and conference centres](#)
- Residential buildings
- Commercial buildings
- Hotels and restaurants



Overlength has a history in architecture. The UN building in Geneva was built with 13-metre-high glazing in 1971.

Design options

The usual float glass types (Diamant and Planiclear) and to-be-tempered coatings (COOL-LITE XTREME, COOL-LITE SKN and Planitherm) can be used in Overlength formats. In addition, the glass can be processed, assembled and refined using all the processes known from standard formats.

Saint-Gobain is your partner of choice in building facades with Overlength glazing, offering a strong network of processors and installers to meet your project expectations.

Everything is possible with overlength glass:

- Cut to Size
- Improved Edgework; Smooth Ground or Polished
- Drilling of Holes
- Bent or Curved glass
- Heat-Soak Toughened Safety Glass
- Heat-Strengthened Glass
- Laminated Safety Glass
- Laminated Glass with Coloured and Decorative Interlayers
- Single or Multi-coloured Digital Print
- Full Surface Enamelling

Learn more about planning as well as [logistics](#) and handling with overlength glass.

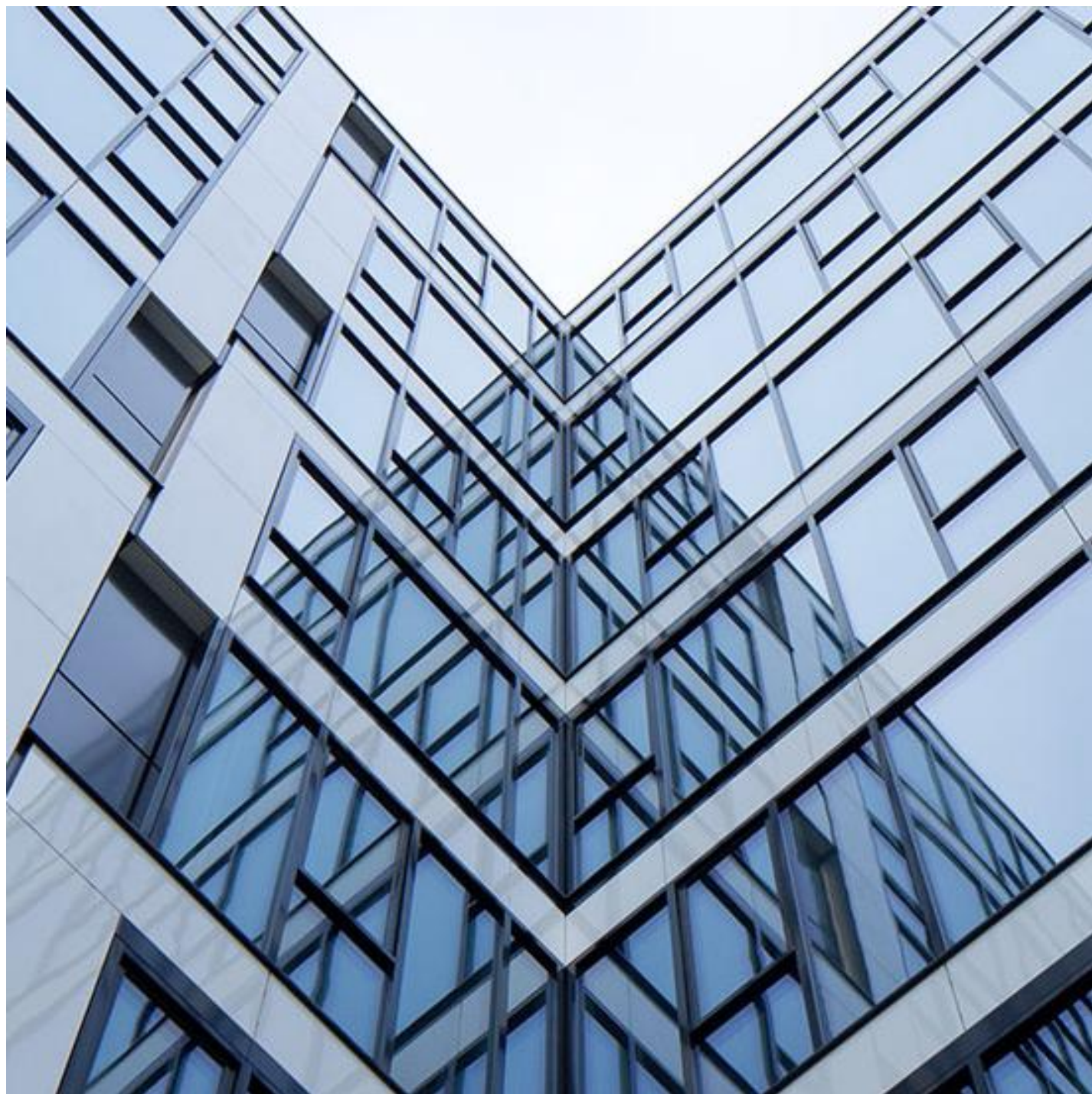
Possible Associations



SGG PLANICLEAR®



SGG DIAMANT



SGG COOL-LITE SKN



SGG COOL-LITE XTREME

[Find a distributor](#)



[Projects](#)

HERZOGENRATH Innovation Centre

[Saint-Gobain is investing in Industry 4.0 and in new technologies and digitization as a result of which the company is expanding and modifying its factory premises in Herzogenrath...](#)





[Projects](#)

[Salzburg Exhibition Centre, Austria](#)

[In recent years, the architecture of trade fair halls and convention centres has undergone dramatic changes. Whereas in the past they were planned as functionally inward-looking a...](#)

