

SPIDERGLASS - SPIDER GLAZING



Description

SPIDERGLASS is a modern solution for exterior bolted glass assemblies, which secures the glazing to a support structure by means of point-fixings. Intermediate elements which are inserted between the bolt and the glass ensure a uniform transmission of stresses whilst avoiding local stresses and a watertight facade.

The system incorporates SECURIPOINT (specially toughened) glass. SPIDERGLASS is now also certified as blast-enhanced to ISO 16933 “Glass in Building – Explosion resistant security glazing – Test and classification for arena air blast loading”.

Applications

- Facades
- Inclined facades
- Double-skin facades
- Overhead glazing
- Interior partitions / atria Canopies

For monolithic glass, SPIDERGLASS consists of an articulated bolt-fixing which is secured to a support structure to ensure that the glazing is firmly fixed in position. Use of such bolts permits movement in all directions. Each fitting is carefully fitted into a countersunk hole and is secured flush into the exterior surface of the glass.

Laminated glass, in the form of STADIP SPIDERGLASS (combined with heat-strengthened glass) can also be used with SPIDERGLASS fixings and ensures the integrity of the glass in the event of accidental breakage.

Double glazed SPIDERGLASS incorporates a SECURIPOINT (specially toughened) outer leaf with either a toughened or laminated inner. The units can incorporate any of the COOL-LITE or PLANITHERM products.

Compatible Products

Most glass products from the SAINT-GOBAIN GLASS range can be used with SPIDERGLASS:

- PARSOL body-tinted glass
- PLANICLEAR clear float glass or DIAMANT extra-clear glass
- COOL-LITE CLASSIC, COOL-LITE ST or COOL-LITE K or SK*, ANTELIO solar control glass
- PLANITHERM low-emissivity glass
- EMALIT EVOLUTION* enamelled glass
- SERALIT EVOLUTION* screen-printed glass.
- It is possible to use BIOCLEAN self-cleaning glass depending on the type of sealants used.

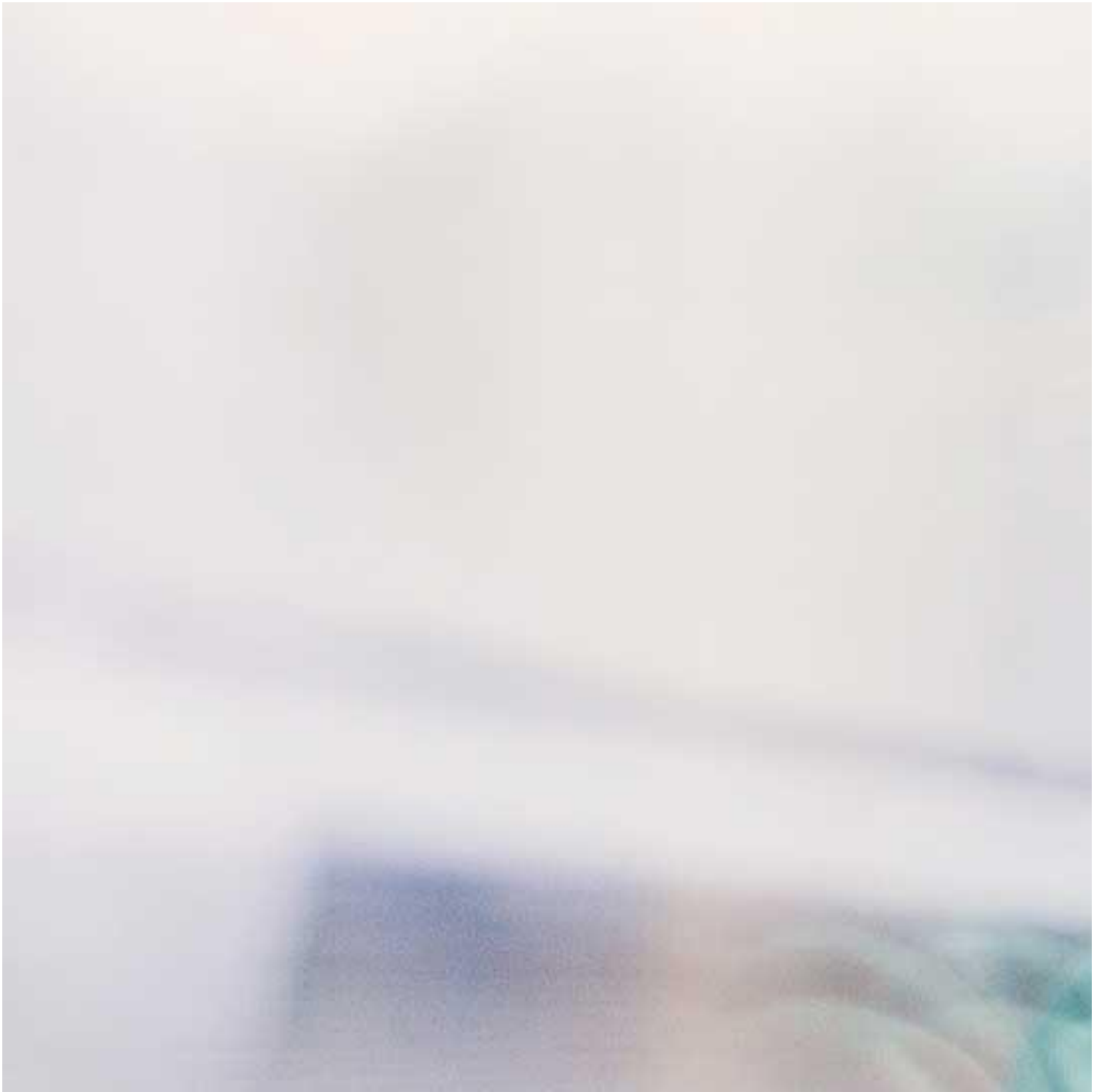
* If these products are used, they are subject to specific requirements.

The spectrophotometric performance of SPIDERGLASS corresponds to that of the glazing which constitutes the system.

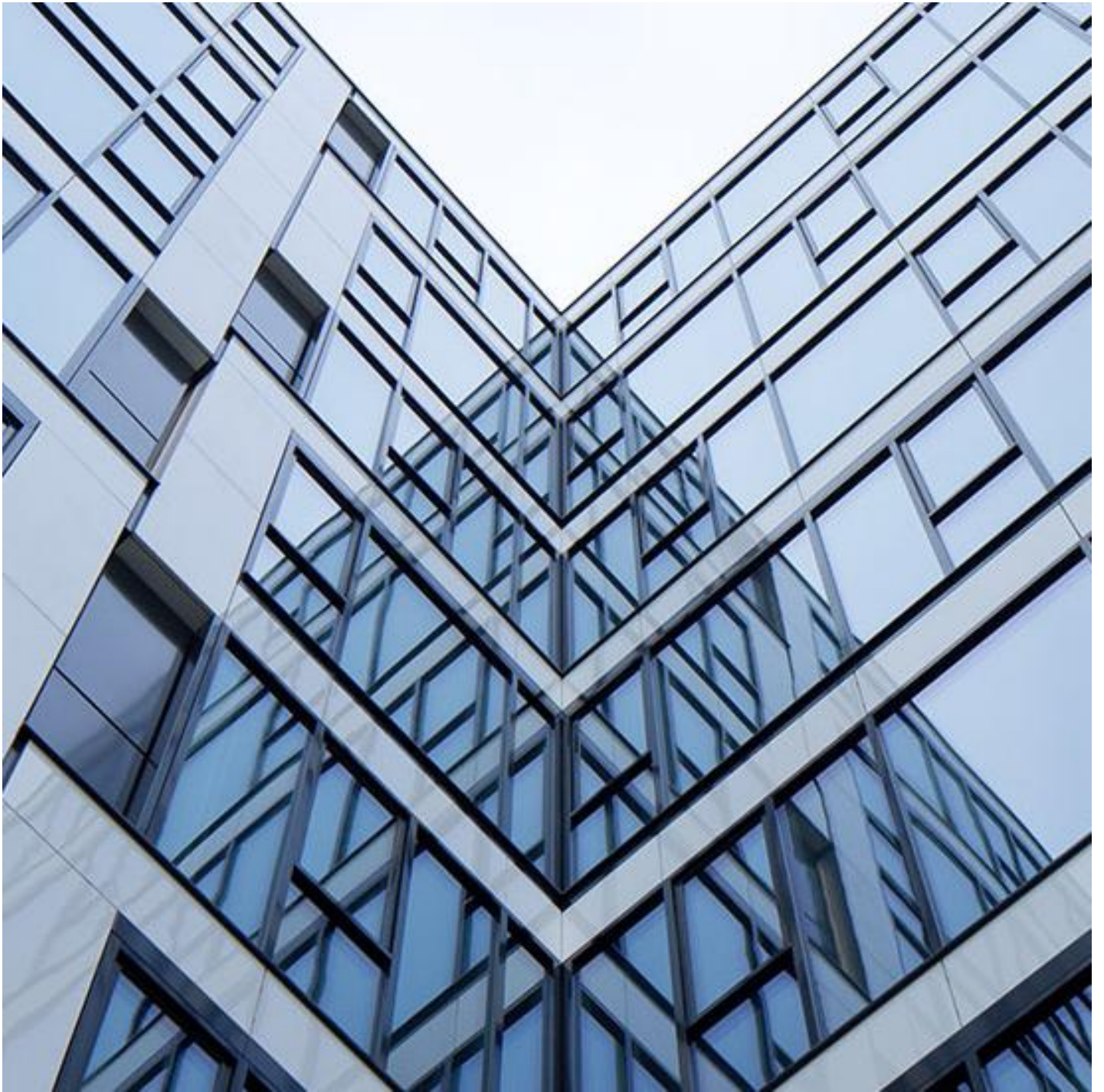
Possible Associations



SGG PARSOL®



SGG PLANICLEAR®



SGG COOL-LITE SKN



SGG DIAMANT



SGG PLANITHERM® FAMILY

[Find a distributor](#)