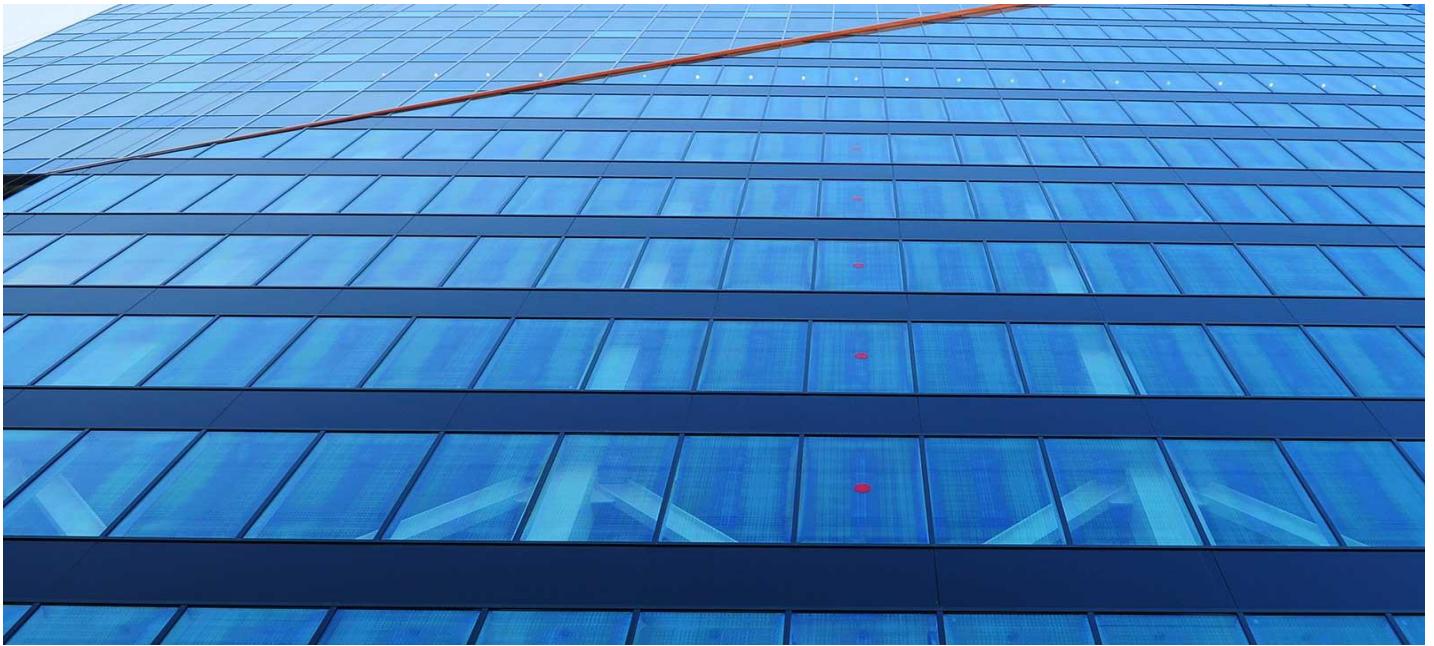


SGG COOL-LITE® SKN 154/154 II



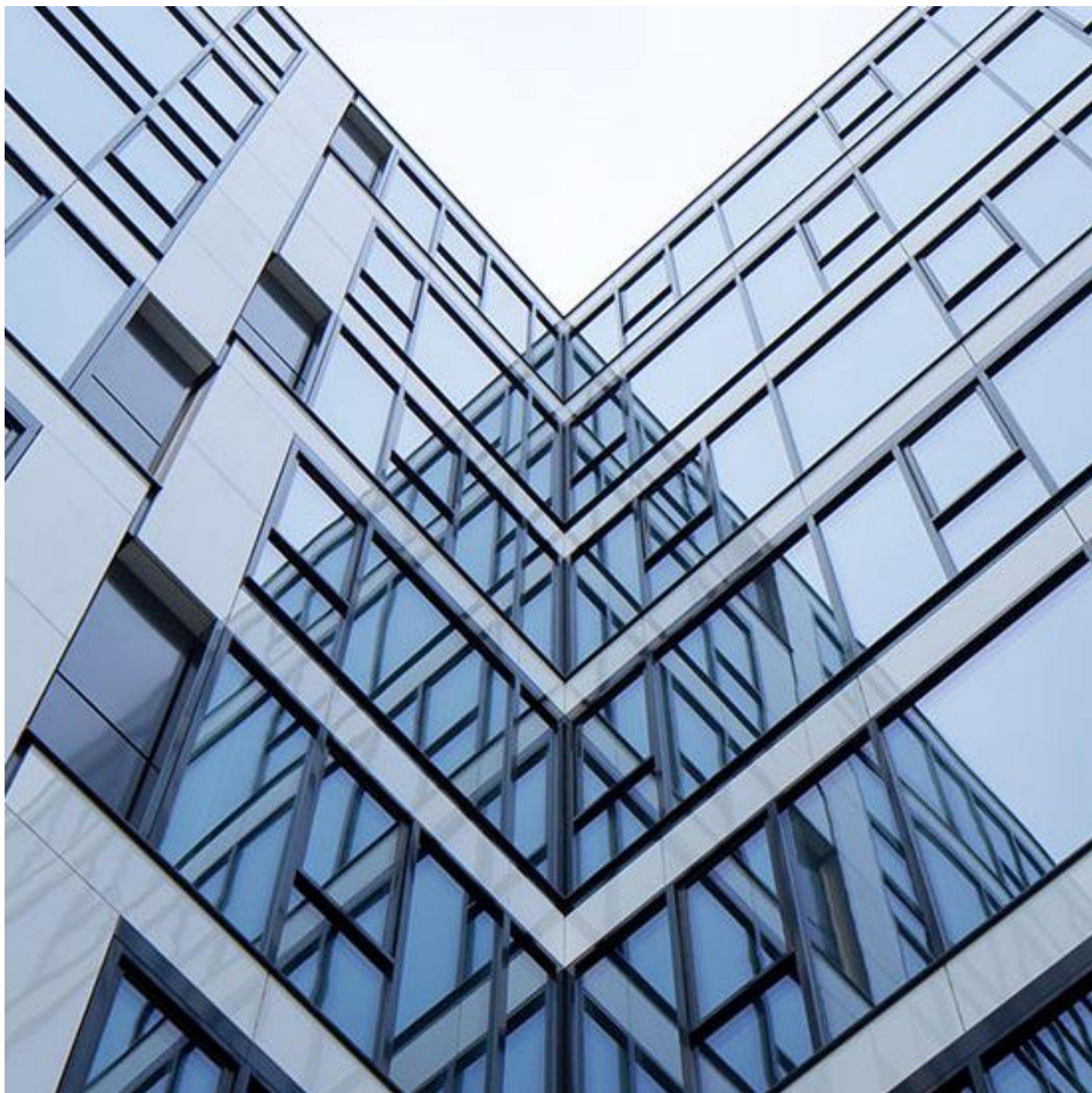
Description

In order to achieve its superior thermal properties, solar control properties and neutral appearance, SGG COOL-LITE SKN 154 II must always be toughened or heat strengthened before assembly into a double-glazed unit (coating on face 2).

Applications

Ideal for offices, hotels, restaurants, schools, hospitals and many other commercial buildings. SGG COOL-LITE SKN can be installed in many glazing applications: Curtain walling Exterior structural sealant glazing Exterior bolted glass assemblies Double-skin applications Cladding of external walls Overhead and atria glazing For further information on the processed product variations, such as laminating, curving and toughening please look at the Processing of SGG COOL-LITE SKN/SKN II page.

Find out more



SGG COOL-LITE SKN

[Find a distributor](#)