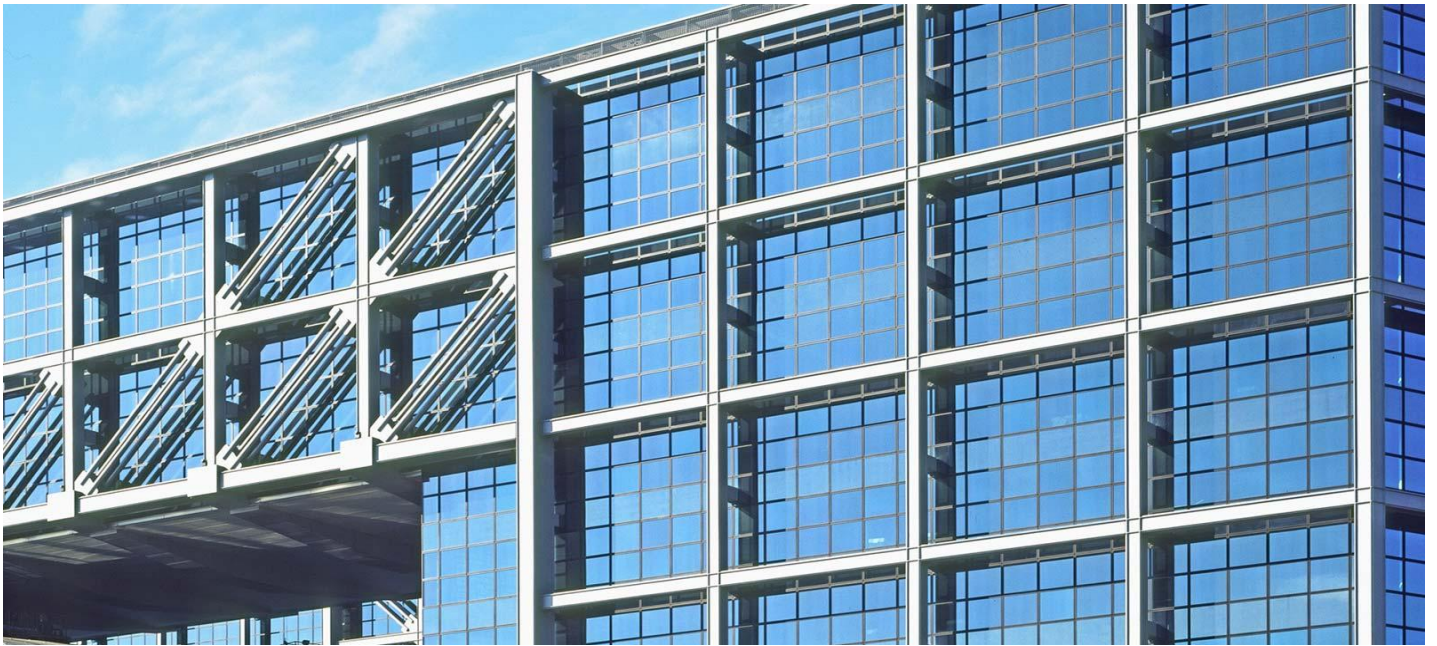


SGG ANTELIO®



Description

Applied onto SGG PLANICLEAR clear glass or SGG PARSOL body-tinted glass during the manufacture of the glass on the float line, the coating is fused by pyrolysis, which gives it a number of properties:

- Total integration with the surface of the glass
- Strength and stability over time, so the coating can be positioned on the outer face (face 1) or the inner face (face 2) of the glass
- Solar control properties and a reflective appearance

Range

Four different variations:

- SGG ANTELIO CLEAR on SGG PLANICLEAR clear glass
- SGG ANTELIO SILVER on SGG PLANICLEAR clear glass
- SGG ANTELIO EMERALD on SGG PARSOL GREEN body-tinted glass
- SGG ANTELIO BRONZE on SGG PARSOL BRONZE body-tinted glass

All the products can be used in façades, with the coating on face 1 or face 2:

- On face 1, the façade has a more reflective and uniform appearance producing true and vibrant reflections of the surrounding environment
- On face 2, its appearance and reflection is generally softer and the colour of the base glass is more apparent and accentuates the features of the façade

Applications

- Offices and commercial buildings
- Schools and industrial buildings
- Apartment blocks

SGG ANTELIO glass can be used in most types of façade:

- Windows in traditional façades
- Curtain walling
- Exterior structural sealant glazing
- Exterior glass bolted assemblies
- Double-glazed applications (coating on face 2 or on face 1)

ADVANTAGES

- High light transmittance: good natural lighting of internal areas
- Reduces solar heat gain: savings in air conditioning
- Many design options for architects: increased architectural creativity using curved, enamelled or screen-printed SGG ANTELIO
- Uniform appearance of facades: using the same SGG ANTELIO enamelled in spandrel panels gives a uniform appearance between vision and non-vision areas

Find out more



Build strong and aesthetic architectural façades with Saint-Gobain façade systems

[Find a distributor](#)