

SGG COOL-LITE® SKN 176 / 176 II



Description

SGG COOL-LITE SKN 176 / 176 II is a solar control coating for use in residential or commercial buildings, either for façades or overhead glazing. The coating is applied to SGG PLANICLEAR float glass by cathodic sputtering under vacuum conditions.

Due to the unique properties of the coating, it is ideally suited to applications requiring a high light transmittance, low g-value and excellent neutrality.

The 4mm option allows the product to be used in entry level applications such as high end residential / low end commercial applications. This extended functionality allows more design flexibility whilst retaining excellent neutral aesthetics. SGG COOL-LITE SKN 176 / 176 II is available in 6000mm x 3210mm and 3210mm x 2550mm dimensions and in 4mm, 6mm, 8mm and 10mm thicknesses allowing for flexible design potential.

In order to achieve its superior thermal properties, solar control performance and neutral appearance, SGG COOL-LITE SKN 176 / 176 II must always be toughened or heat strengthened before assembly into a double-glazed unit.

SGG COOL-LITE STADIP SKN 176 is available in thicknesses of 6.4mm and greater.

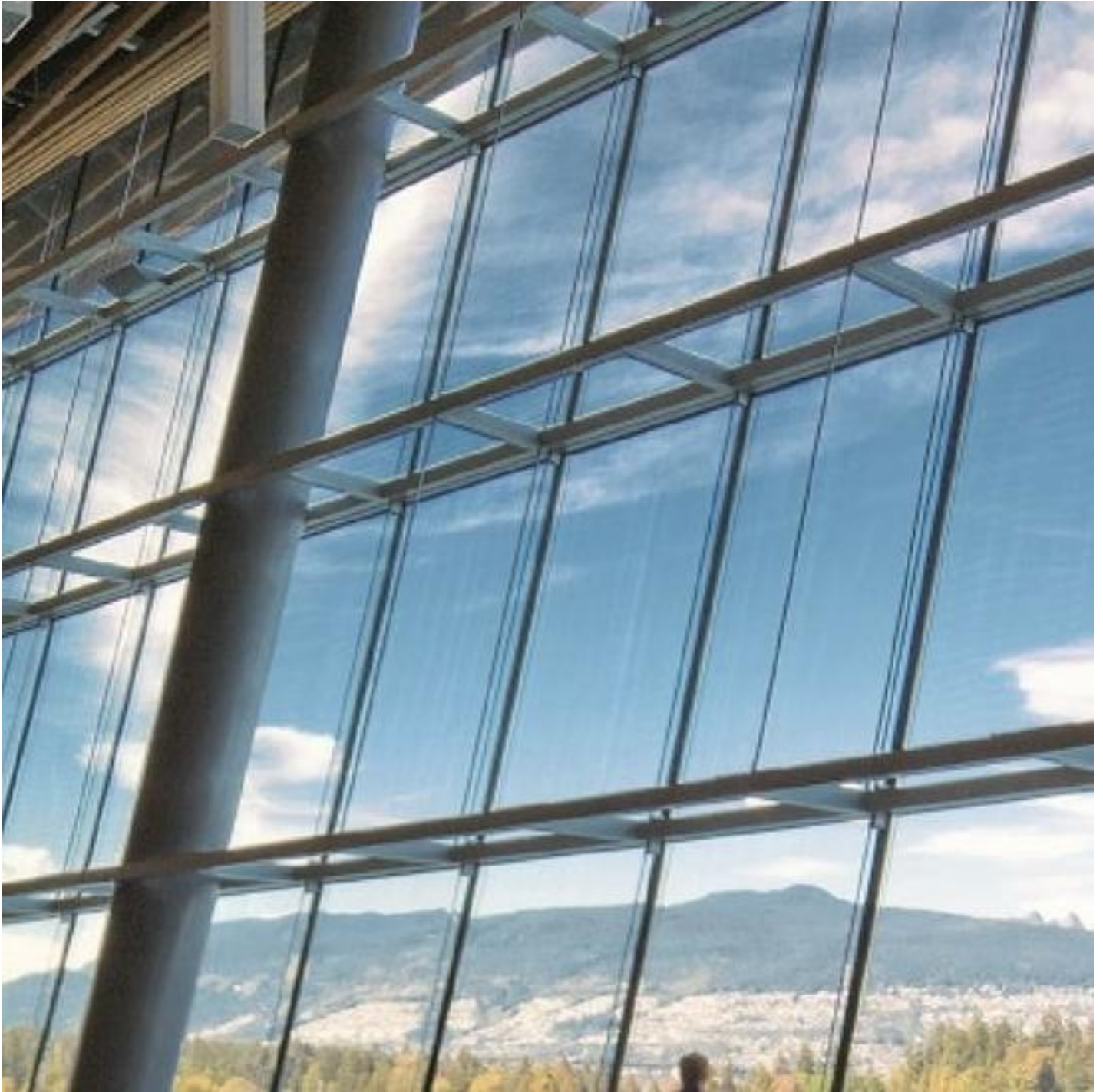
Applications

Ideal for offices, hotels, restaurants, schools, hospitals and many other commercial buildings. SGG COOL-LITE SKN can be installed in many glazing applications:

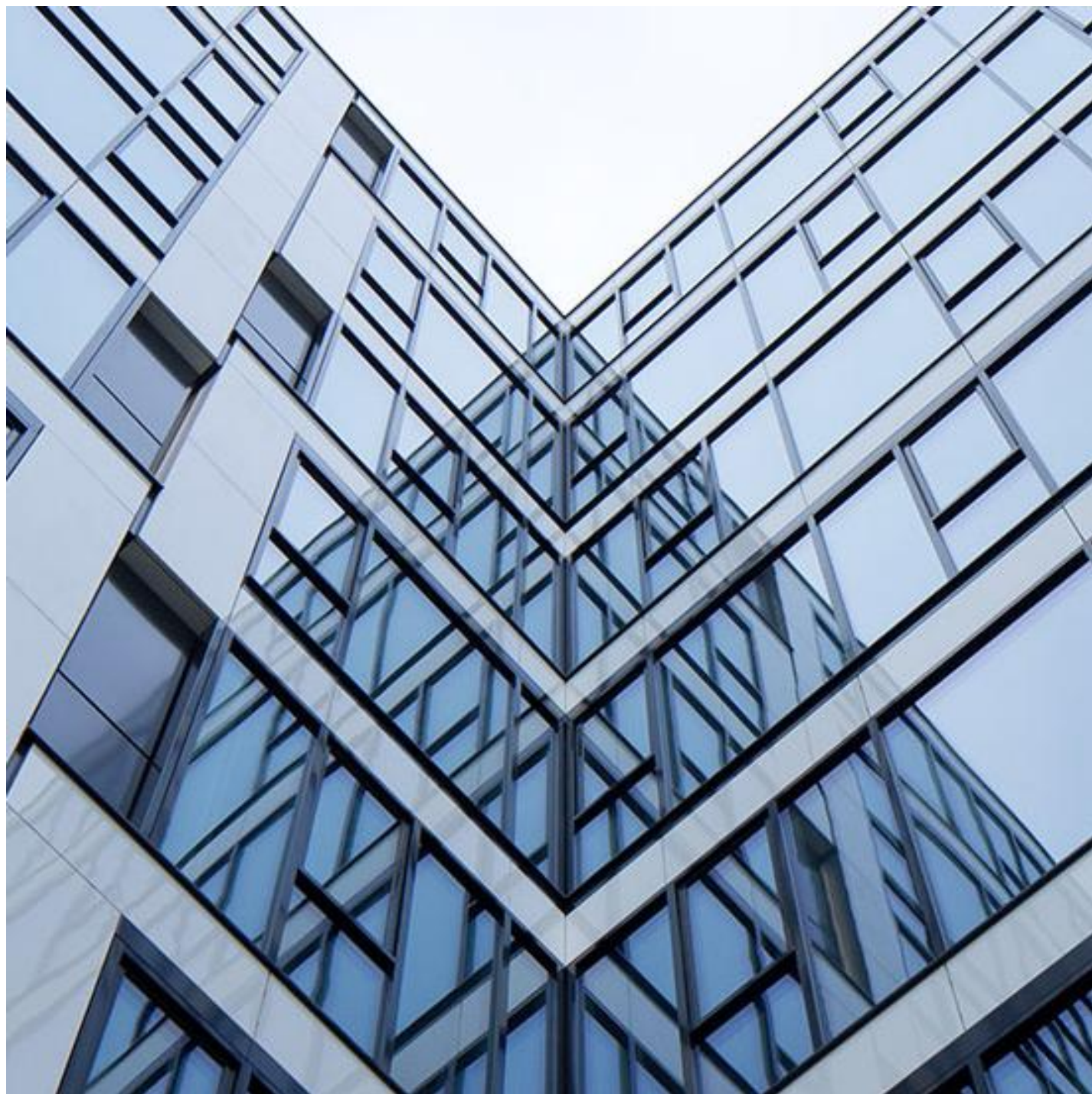
- Curtain walling
- Exterior structural sealant glazing
- Exterior bolted glass assemblies
- Double-skin applications
- Cladding of external walls
- Overhead and atria glazing

For further information on the processed product variations, such as laminating, curving and toughening please look at the Processing of SGG COOL-LITE SKN/SKN II page.

Find out more



Build strong and aesthetic architectural façades with Saint-Gobain façade systems



SGG COOL-LITE SKN



SGG COOL-LITE® SKN 144 II



SGG COOL-LITE® SKN 154/154 II



SGG COOL-LITE® SKN 165/165 II

[Find a distributor](#)