

Kraków Airport



Kraków, POLAND

Kraków Airport

Airport

PRODUCT: COOL-LITE® XTREME 60/28

A facade glazing that does not go unnoticed for the most modern airport in Poland.

DESCRIPTION

After three-year extension and modernization, the Kraków Airport is now the second largest, fastest growing and the most modern airport in Poland.

By flying to Kraków, customers are now set to enjoy an even higher level of service thanks to its new passenger terminal building opened in 2016. With 55 000 square meters of facilities, the Airport is now capable of serving 8 million passengers annually.

Designed by APA Czech Duliński Wróbel Architects, the idea was to make the new terminal front a recognizable sign identifying Kraków Airport. Thus, they decided to build the facade in the form of a glass prism with significantly tilted front, additionally covered with a copper rooftop. The design of the building allows adding, not only a higher dynamic and expression to the Airport, but also rational, functional and

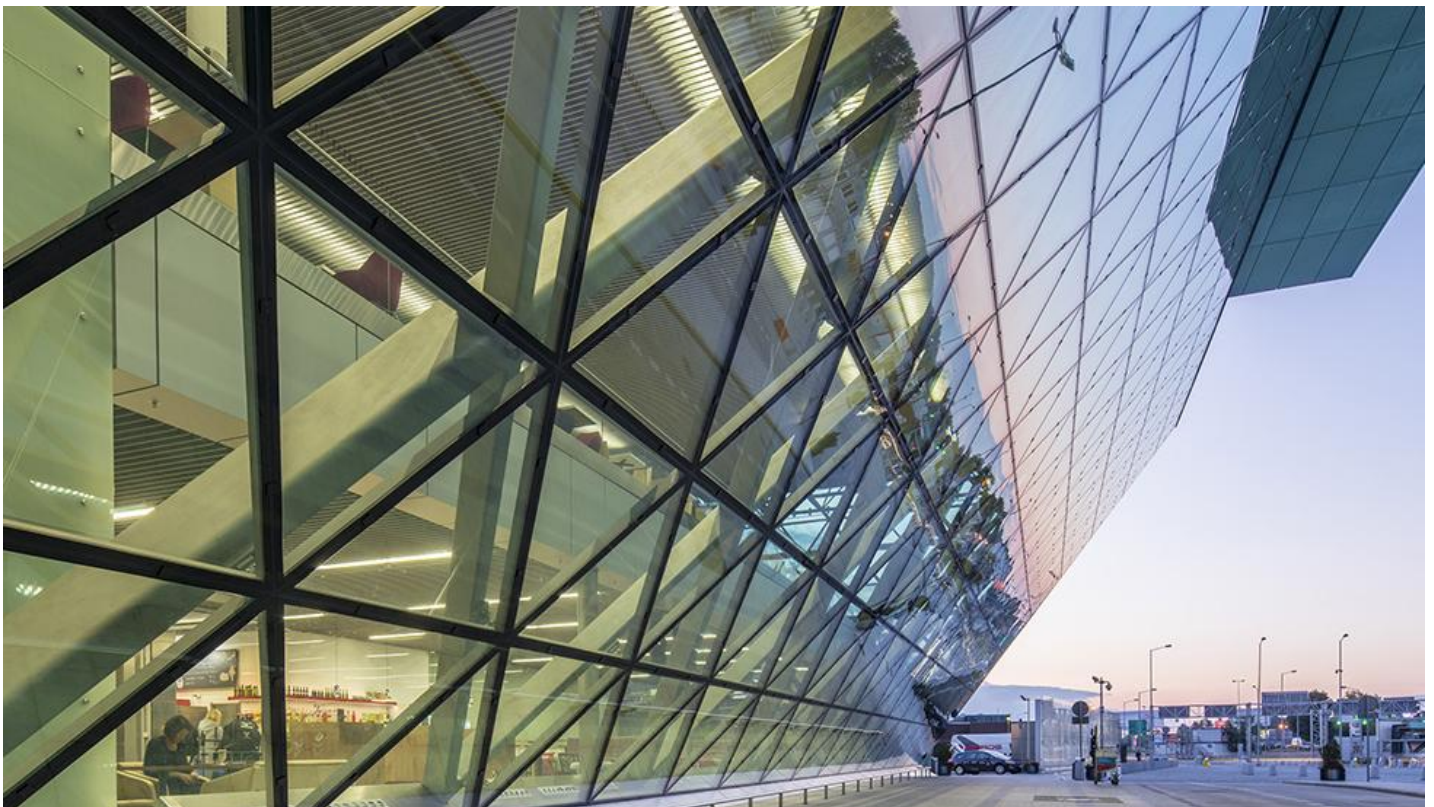
technical solutions for the sunlit facade. Moreover, the use of greenish prepatinated copper in the facade was meant to emphasize the effect of architectural identification.

Impressive architectural projects for Kraków Airport that will further improve the standard of the services offered to the passengers, and enable to answer the new airport premises.

Photo gallery



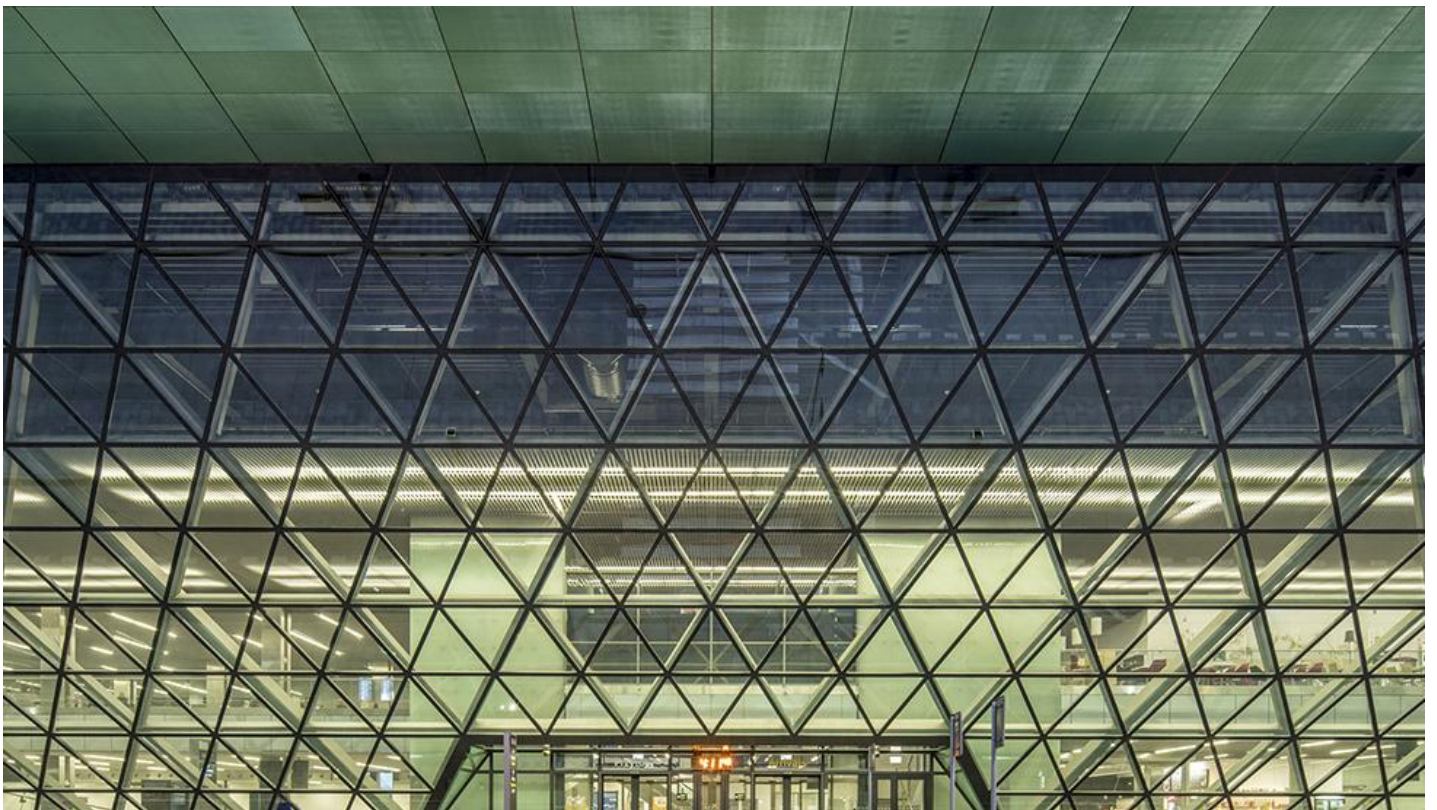
Kraków Airport facade Saint-Gobain



Facciata Aeroporto di Cracovia dettaglio vista laterale



Facciata Aeroporto di Cracovia vista laterale 2



Facciata Aeroporto di Cracovia vista frontale

Product used

While choosing performance materials for the building, the new terminal prevents from undesired heat gains and minimizes the use of energy-consuming air-conditioning systems.

For its façade, Saint-Gobain was happy to provide its latest innovation in glass for façade with COOL-LITE® XTREME 60/28 product which has the highest selectivity (the ratio of visible light to solar heat gain) in the COOL-LITE® range while offering advanced thermal insulation properties.

Flooding the terminal with light, while benefiting from excellent solar control and thermal insulation properties were important criteria for the Airport as they needed to minimise the negative effects of sunlight operation on the south side. Choosing a high performance glazing for its facade is a way to improve the comfort of the passengers.

Project Details

Date & location

2016, Poland

Architect

APA Czech Duliński Wróbel Architects

Entrepreneur

Międzynarodowy Port Lotniczy w Krakowie

Contractor

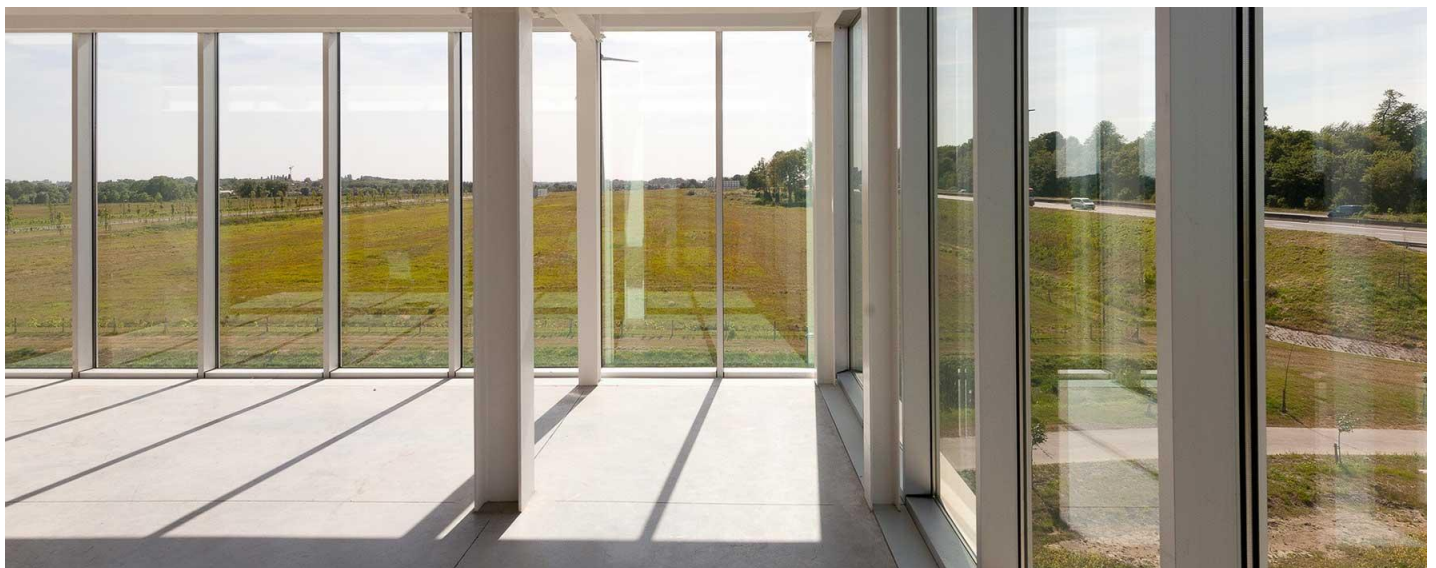
Zakład Techniczno-Budowlany POLBAU Sp. z o. o.

Glazier

Press Glass

Installer

ALSAL



SGG COOL-LITE® XTREME 60/28 II

SGG COOL-LITE XTREME 60/28 II is a high performance solar control coating and forms part our XTREME triple-silver solar control product range, which offer the highest selectivity ...