

DECORATIVE GLASS FOR INTERIOR DESIGN



DECORATIVE GLASS FOR INTERIOR DESIGN

Various types of textured, translucent, and obscure decorative glass for interior design

Glass is the best way to achieve light, comfortable and safe spaces. It offers designers and users numerous advantages in decorating or designing interior and exterior residential and work spaces.

With our glass products for interior design, you can:

Take advantage of natural light and be safe from prying eyes

Glass allows natural light to flow into living and work spaces. This is beneficial to health and saves on the cost of artificial lighting. In addition, the use of translucent glass ensures a balance between natural light and privacy.

Expand the visual field and preserve tranquility and comfort

As a room divider, the transparency of decorative glass makes it the ideal material for designing very open, user-friendly spaces that encourage discussion. As wall facing or decoration, for example, mirrors contribute to visual comfort. They reflect nearly all the light they receive, thereby increasing the overall brightness of a room. In addition, large mirrors provide depth. Using mirrors therefore contributes to occupants' visual

comfort.

Design safely with boldness and elegance

The mechanical strength of glass makes it possible to design large areas with fine, elegant structures, safely and securely. There are three types of glass that guarantee safety in case of breakage:

- Toughened glass of type SGG SECURIT, which has increased mechanical and thermal strength. It is used wherever the edge is visible and when the glass supports a load that is more than its own weight (all-glass doors, [shower enclosures](#), tables, shelves, etc.). Toughened glass is also useful near a heat source, such as for a backsplash
- Laminated glass of type [SGG STADIP](#), which is ideal for infill panels: doors, tinted or decorative glass partitions with uprights, front panels of furniture or balustrades (for composition of the glazing, please ask a professional for advice)
- gluing a SAFE film to the glass to prevent harmful shards from falling in case of breakage. Reserved for opaque glass, this method is inexpensive and is generally sufficient to secure closet doors or wall facings. Where food is present, this application protects food from micro-shards.

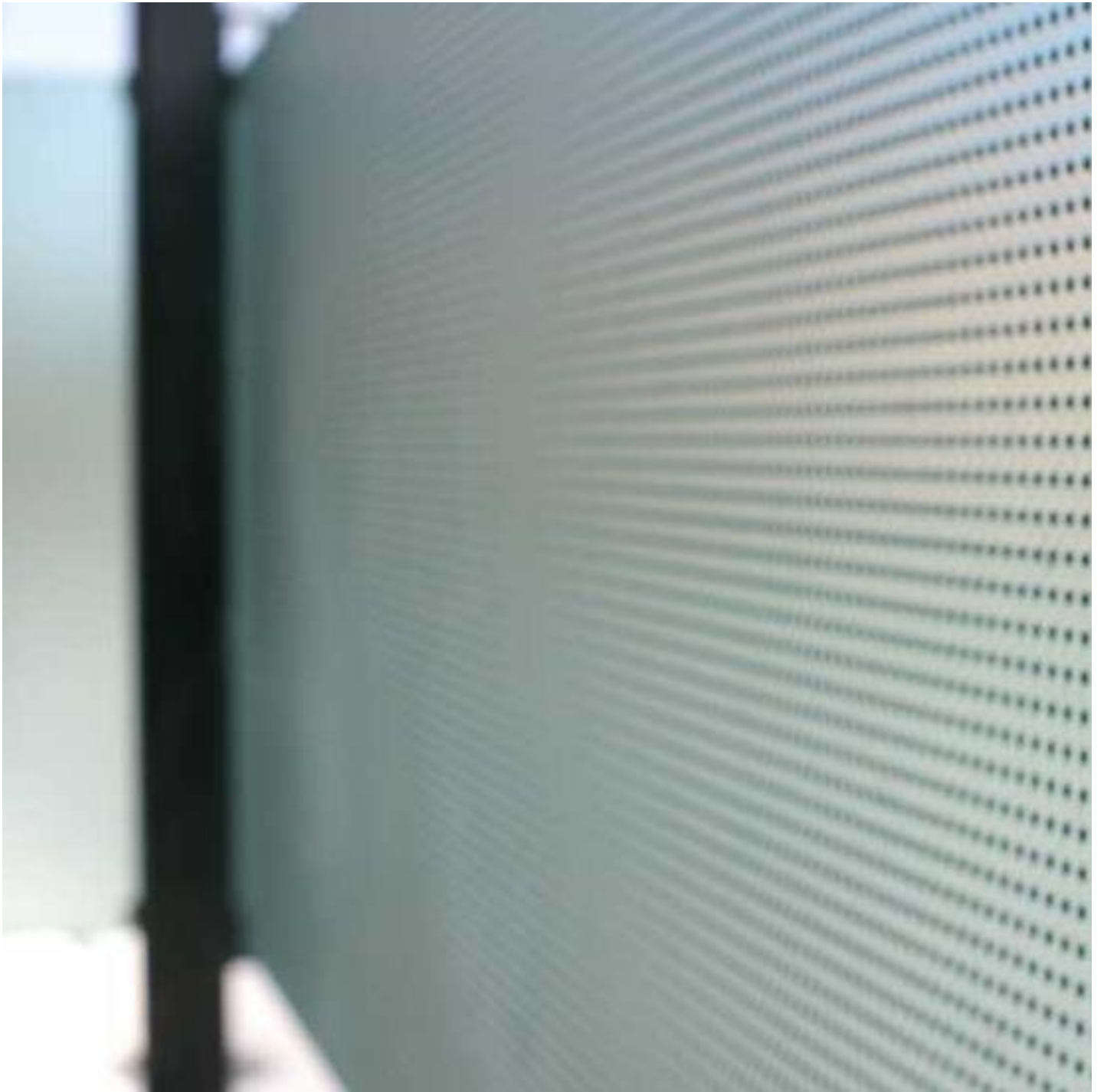
Enjoy a healthy, easy-to-clean space

A healthy, easy-to-maintain material, glass is widely used in interior design: completely inorganic and emits no volatile organic compounds (VOC). For VOC emissions, only laminated glass, mirrors (guaranteed 7 years) and lacquered glass are subject to regulatory labeling. Thanks to the careful way in which it is manufactured, all Saint-Gobain decorative glass for interior design are rated A+. In terms of hygiene, because of its smooth surface and resistance to cleaning products, glass is easy to maintain. Installing large sections of glass limits the number of joints and the build-up of dirt often associated with them.

Various types of decorative glass for interior design

The various types of Saint-Gobain glass presented in this section can be used according to the desired transparency and decorative effects: clear, extra-flint, colored, [obscure glass](#), translucent printed, ground, lacquered, [patterned glass](#), [frosted glass](#), enameled glass with an original design produced using silkscreen printing or [digital printing](#).

Find out more



Decorative patterned glass



SGG DIAMANT



Lacquered glass SGG PLANILAQUE COLOR-IT



SGG VISION-LITE



SGG STADIP COLOR®



SGG SATINOVO® MATT



SGG PARSOL® ULTRA GREY



SGG PARSOL®

[Find a distributor](#)